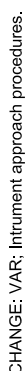
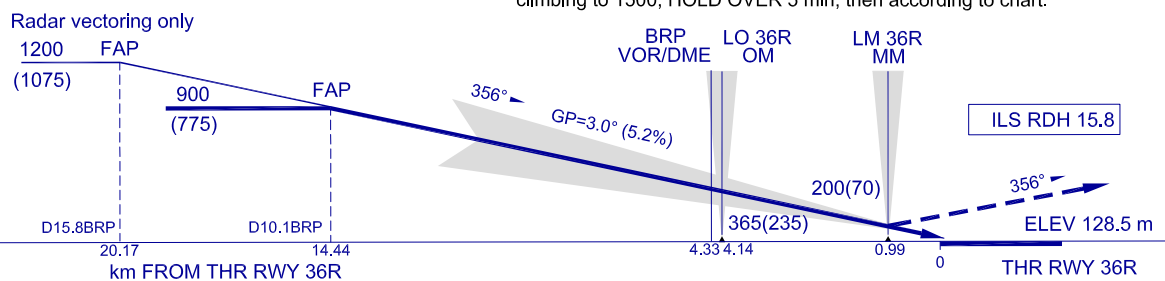


## AD ELEV 130 m

KYIV/Boryspil'  
ILS RWY 36R



**MISSED APPROACH RADIO COMM FAILURE:**  
Climb on RWY heading to 900(775), turn RIGHT on track 144° to IAF CY NDB  
climbing to 1500, HOLD OVER 5 min, then according to chart.



OCA/H		A	B		C		D	NOTE: 1. Visual manoeuvring below 750 not authorized 2. Speed restriction: Minimum 100 kt IAF DEVKI and IAF 3. Expect simultaneous 4. FAP 1200 authorized		
Straight-in Approach	CAT I	184(56)	187(59)		190(62)		193(65)			
	CAT II	152(24)	157(29)		161(33)		165(37)			
	RWY 36R available for CAT IIIA operations									
Circling		265(140)	280(150)		310(185)		340(210)			
GROUND SPEED		km/h	150	180	210	240	270	300	330	360
FAP-THR 14440 m		min:s	5.47	4.49	4.08	3.37	3.13	2.53	2.38	2.24
RATE OF DESCENT		m/s	2.2	2.6	3.1	3.5	3.9	4.4	4.8	5.2

NOTE:
1. Visual manoeuvring (circling) and visual approach in the sector below 750 not authorized.
2. Speed restriction: MAX IAS 407 km/h (220 kt) at IAF MODNA, IAF DEVKI and IAF CY NDB.
3. Expect simultaneous approaches.
4. FAP 1200 authorized for simultaneous approaches.