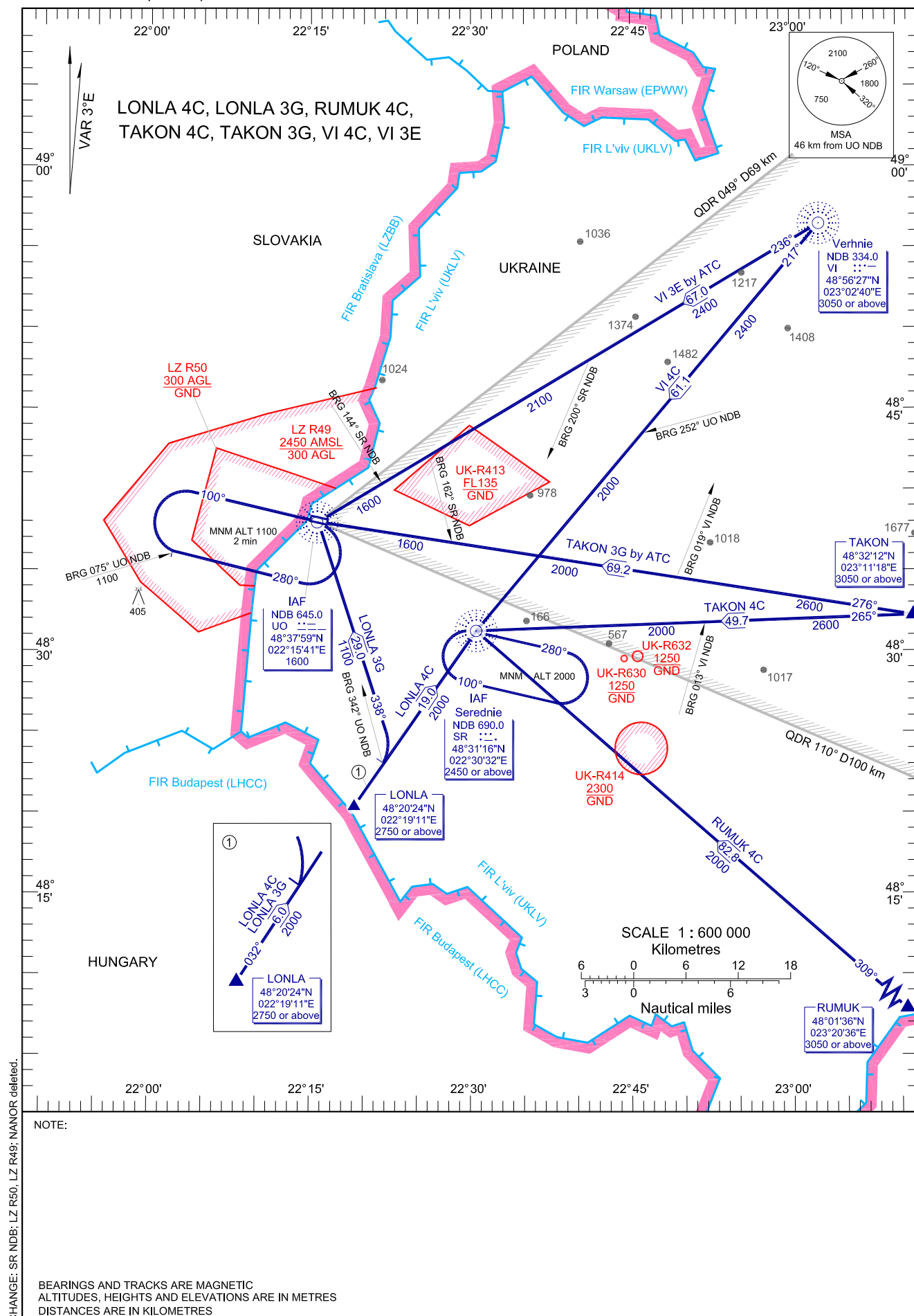


STANDARD ARRIVAL CHART
INSTRUMENT (STAR)-ICAO

TRANSITION LEVEL	by ATC
TRANSITION ALT	3050

TWR 134.500
APP 121.900

UZHGOROD
RWY 10



CHANGE: SR NDB; LZ R50, LZ R49; NANOR deleted.

STAR RWY 10

Designator	Route	Altitude	Remarks
LONLA 4C LONLA FOUR CHARLIE	On track 032° to IAF SR NDB, then according to approach chart	Cross LONLA at 2750 or above, IAF SR NDB at 2450 or above	nil
LONLA 3G LONLA THREE GOLF	On track 032° to intercept BRG 342° UO NDB, turn LEFT on track 338° (BRG 338° UO NDB) to IAF UO NDB, then according to approach chart	Cross LONLA at 2750 or above, IAF UO NDB at 1600	nil
RUMUK 4C RUMUK FOUR CHARLIE	On track 309° to IAF SR NDB, then according to approach chart	Cross RUMUK at 3050 or above, IAF SR NDB at 2450 or above	nil
TAKON 4C TAKON FOUR CHARLIE	On track 265° to IAF SR NDB, then according to approach chart	Cross TAKON at 3050 or above, IAF SR NDB at 2450 or above	nil
TAKON 3G TAKON THREE GOLF	On track 276° to IAF UO NDB, then according to approach chart	Cross TAKON at 3050 or above, IAF UO NDB at 1600	By ATC clearance
VI 4C Verkhnie FOUR CHARLIE	On track 217° to IAF SR NDB, then according to approach chart	Cross VI NDB at 3050 or above, IAF SR NDB at 2450 or above	nil
VI 3E Verkhnie THREE ECHO	On track 236° to IAF UO NDB, then according to approach chart	Cross VI NDB at 3050 or above, IAF UO NDB at 1600	By ATC clearance